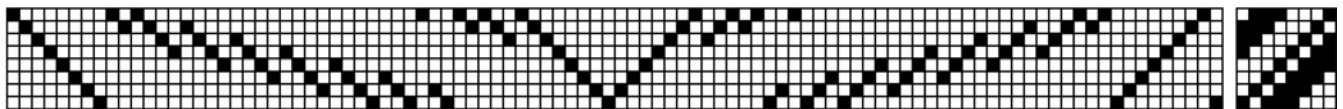
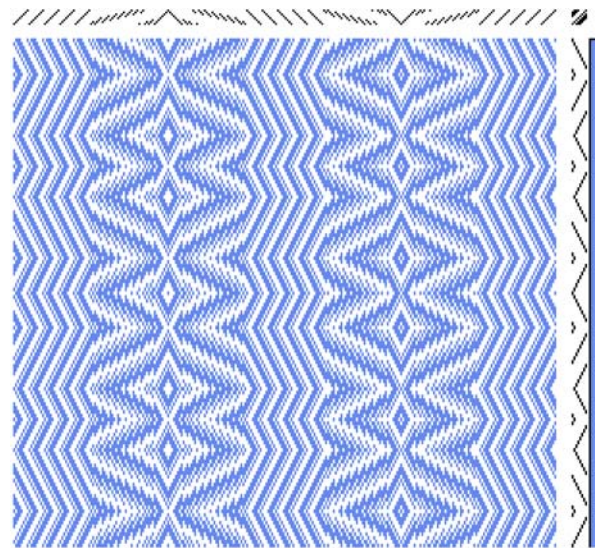
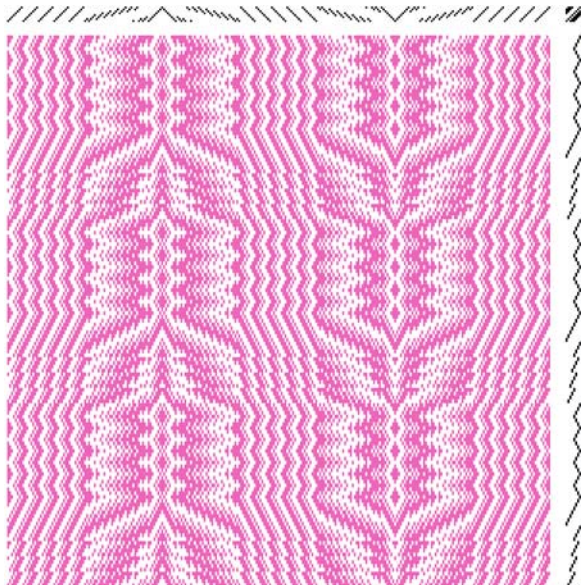


Hi everyone,

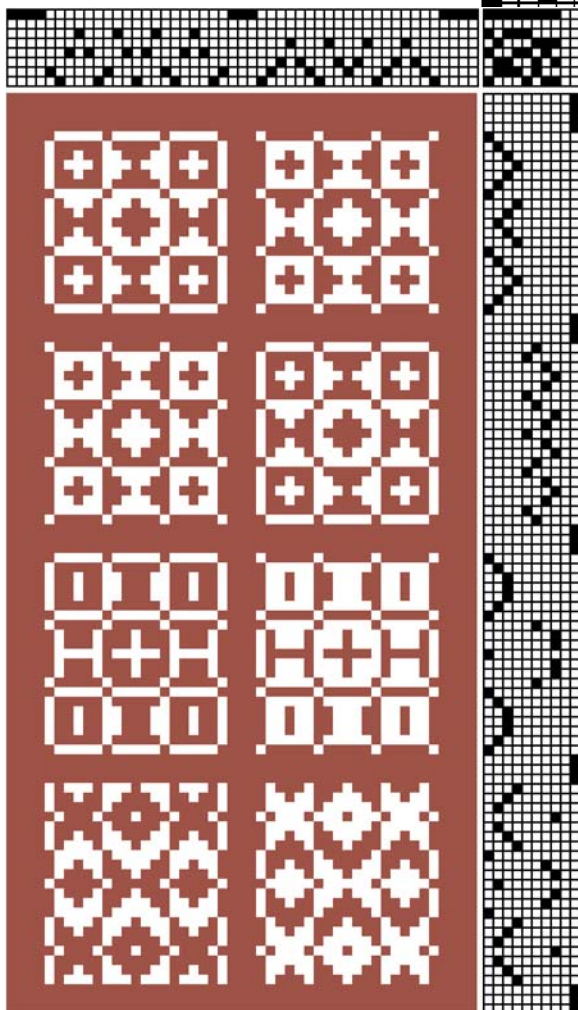
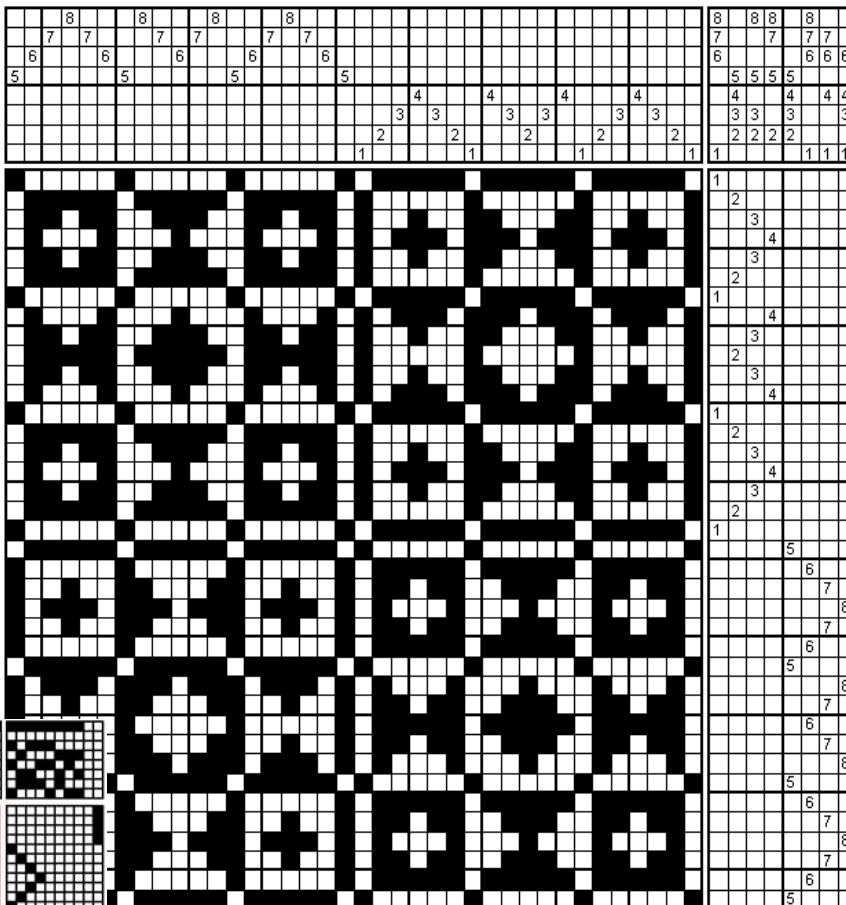
I have had a couple of runners that I wanted to analyze for a while. They come from Estonia and I believe they are from the same threading. They appear to be done with 8 or 9 shafts. Since I think that 8 is more likely, I have done the drafts using 8 shafts. They appear to be a snowflake twill type design. The drafts are mostly correct – a little bit different – but close. (



A detail of the threading and the tie-up.

I have also been studying ways to do rep weave drafts. Warp faced weave structures are hard to represent with standard weaving software. Constants need to be put on extra shafts.

I like to manipulate the draft and see what is possible. I suppose that I consider this a form of fabric analysis or draft analysis. If done on 8-shafts this draft would require pick-up in those rows that are solid background. This draft was also changed to put the pattern in groups of 2-shafts so that it would be easy to thread for rep weave. Only thick weft picks are shown.



Judie Eatough
judie@eatough.net

Wif files and a pdf file of these pages are located on
www.eatough.net/weave/FabricAnalysis.htm
 The wif files for these drafts are located there.
 Used, Patternland, Fiberworks, Adobe Acrobat,
 WordPerfect and PaintShop Pro.